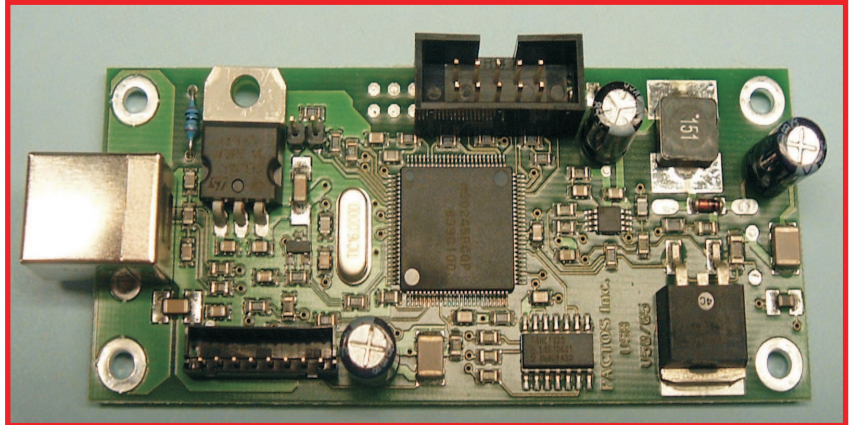


USB- Controller Installation

Driver

Description



For interfacing the metec USB Metec Braillelines with the PC is a signed driver for 32 and 64 Bit architecture available. Please contact Metec via E-mail: contact@metec-ag.de
For the implementation we deliver a zip-file with all necessary files

metecBD.dll

The interface over the dll delivers access to the driver. The dll can also handle the old 32bit driver (metecUSB.sys) with the same functions. The Set / GetLastError principle is used for error handling.

With the driver and dll package comes a small command line application in source which shows how to handle the

dll functions:

BrdEnumDevice

enumerates all devices and deliver the device string of the attached devices. Returns the number of found devices

BrdInitDevice

initiates a device identified by its number or name and delivers its type (BRD_TYPE_USB_LINE =1 for braille lines) . Returns its device number or -1 for error

BrdHighVoltage

set the high voltage on or off

BrdWriteData

writes data to the braille device specified by datapointer and length. The Bit- Pin ordering is defined by the type of braille modules used

USB- Controller Installation

Description

C# sample

BrdReadData

reads 8 byte data from device containing the IAB position (0xff for no key pressed) and the bits for the connected keys (depending on the Hardware version (6key, 10 key...))

BrdSetNoOfModules

sets the number of modules for braille line display. The USB controller reads the number of the connected modules if possible. In this case it is not needed to change it with this function

```
[DllImport(@"MetecBD.dll", EntryPoint =  
"BrdEnumDevice")]  
internal static extern int BrdEnumDevice(byte[] lpszDev,  
int len);  
[DllImport(@"MetecBD.dll", EntryPoint =  
"BrdInitDevice")]  
internal static extern int BrdInitDevice(byte[] lpszCriteria,  
ref int pdevtype);  
[DllImport(@"MetecBD.dll", EntryPoint =  
"BrdWriteData")]  
internal static extern bool BrdWriteData(int devnr, int len,  
byte[] data);  
[DllImport(@"MetecBD.dll", EntryPoint =  
"BrdCommand")]  
internal static extern bool BrdCommand(int devnr, byte[]  
data);  
[DllImport(@"MetecBD.dll", EntryPoint =  
"BrdCloseDevice")]  
internal static extern bool BrdCloseDevice(int devnr);  
[DllImport(@"MetecBD.dll", EntryPoint =  
"BrdReadData")]  
internal static extern int BrdReadData(int devnr, int len,  
byte[] buf);
```